

# CONVEYOR TRESTLE LEG FABRICATION AND INSTALLATION

## Project Details

<b>Client</b>	RELIANCE FOREST FIBRE
<b>Time Frame</b>	AUG 2024
<b>Industry</b>	FORESTRY

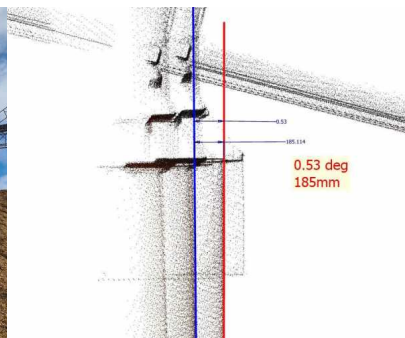
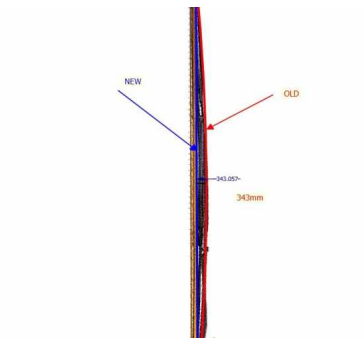


Replacement of damaged support legs for raised woodchip conveyor system.

We were called in to help with urgent damage repairs on a conveyor system in Bell Bay. We worked with the customer to assess the damage and design a repair or replacement solution. The next challenge was to manufacture and install the new support frames so that production was not delayed for our customer.

This project required 3D site scanning for detailed design and site preparation; This ensured the final fabricated legs fit and the extent of the damage could be assessed accurately.

We worked closely with our customer, the structural engineers and all suppliers to fast track the replacement in the shortest possible time frame and the end result was our customer was back up and running with minimal lost downtime considering the damage sustained and remediation works required.



## Challenges,

- Location.
- Terrain.
- Access
- Damage
- Time frame.
- Weather restrictions.
- Site Surveying
- 3D laser cutting for precise assembly of all components
- Difficult access
- Speed of production
- Advanced 3D site scanning
- Manufacturing experience and capability
- Flexible workforce
- Efficient & Fast manufacturing.